



# FAWN RIDGE

## PROTOTYPICAL LANDSCAPE PLANS AND PLANT LIST SELECTIONS

JANUARY 3, 2018



## INTRODUCTION

The goal of this document is to provide the Homeowners of Fawn Ridge with a usable working document, which will provide design ideas for the them, as well as actual plant selections for the home sites. The plans were developed to be as typical as possible, from looking at the various properties within the development. Obviously, there are infinite variations that can be worked out, and existing landscape on most of the properties, so this is designed to be used as a suggestion and guide for the landscape on each property.

As mentioned within the document, the orientation of each property is important, if the home faces the north the plantings on the north will likely be in the shade a lot, and the plantings in the south facing home, will be in full sun most of the time. Keep in mind also, if a large shade tree is being considered for an area of the property, that the shade planting list will be the most appropriate for that area of the site.

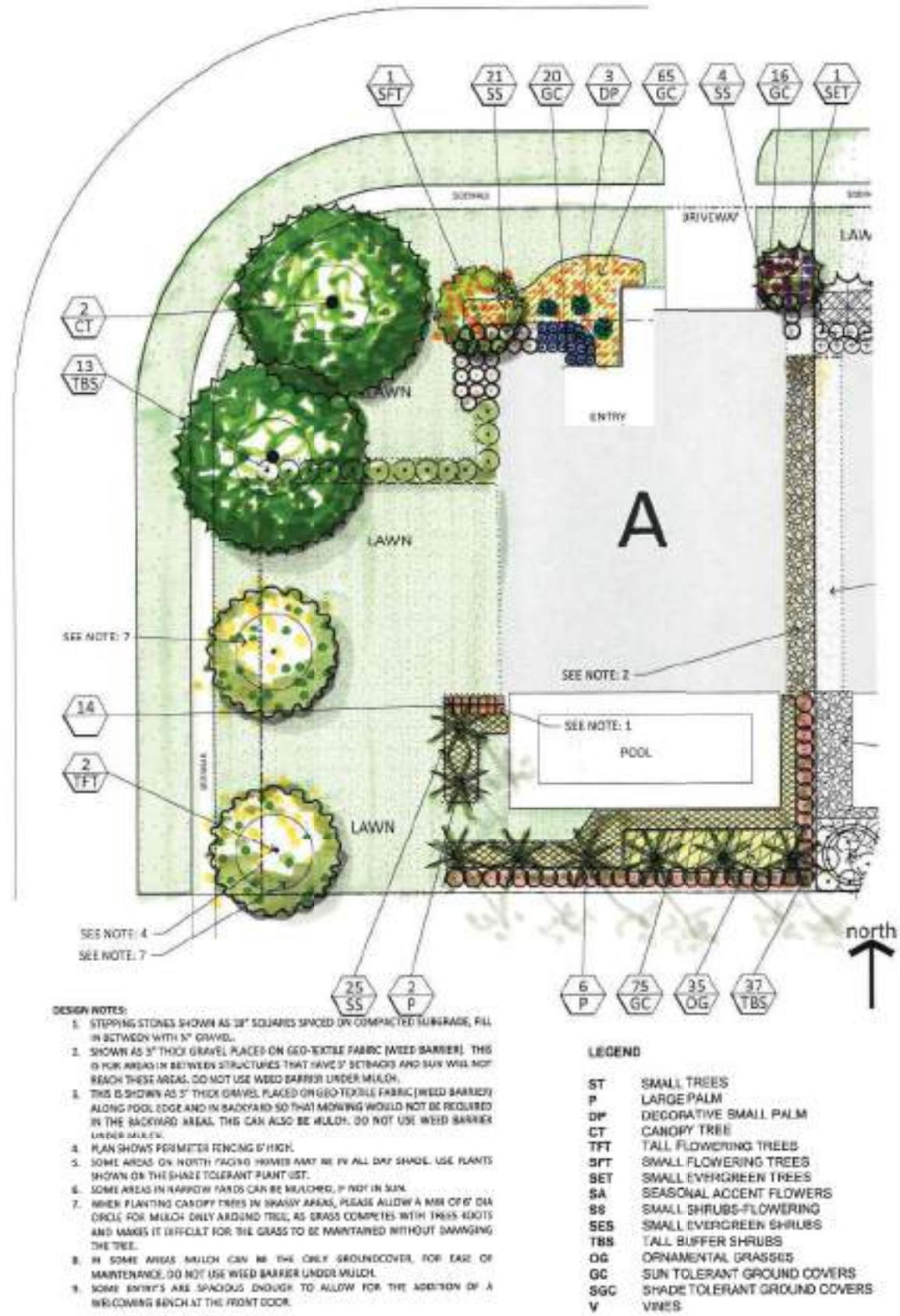
We have shown variations to help provide some examples of robust, moderate and less expensive landscaping budgets. The costs in the document are reflective of what it might cost for buying the plantings in retail locations and installation by the homeowner. These are similar to costs a Landscape Contractor might charge for a full install, so it might behoove the homeowner to take the plan, and some of the plant list selections desired, to a reliable Landscape Contractor to get a quote. Most big box stores and local nurseries carry limited selections of plant materials, especially for full landscaping.

A commercial Landscape Contractor can find any of the plant materials listed in this document readily. A homeowner cannot purchase plants wholesale, only a Landscape Contractor can. Additional costs will be incurred for landscape demolition, sod removal and irrigation installation or adjustments to existing irrigation.

The plant list provided is by no-means everything available in the Florida Friendly Landscape selections, but we feel these are good reliable performers for a consistent and maintainable landscape for the climate and soils of Fawn Ridge.

We highly recommend that any new landscape have an automatic irrigation system installed and working, PRIOR to installing any new plantings. Hand watering is fine for one or two plantings, but the homeowner runs a great risk of overstressing the plantings or having them perish, due to lack of water, after working so hard to install them. Irrigation is such a good tool and friend to the homeowner, as it provides reliable consistent watering and never forgets. If plantings get stressed from lack of water they sometimes will not recover properly, and the stressed condition offers an open door for potential pests and disease. Keep in mind that too much watering will do the same thing. Adjust the irrigation for the seasons - most modern controllers have a percentage up and down for seasonal adjustments on them.

We hope this document proves to be informative and useful and gives the property owners some direction for creating a beautiful, easy to maintain landscape for the Fawn Ridge Community.



- DESIGN NOTES:**
1. STEPPING STONES SHOWN AS 36" SQUARES SPACED ON COMPACTED SUBGRADE, FILL IN BETWEEN WITH 5" GRAVEL.
  2. SHOWN AS 3" THICK GRAVEL PLACED ON GEO-TEXTILE FABRIC (WEED BARRIER). THIS IS FOR AREAS IN BETWEEN STRUCTURES THAT HAVE 5' SETBACKS AND SAYS WILL NOT REACH THESE AREAS. DO NOT USE WEED BARRIER UNDER MULCH.
  3. THIS IS SHOWN AS 5" THICK GRAVEL PLACED ON GEO-TEXTILE FABRIC (WEED BARRIER) ALONG POOL EDGE AND IN BACKYARD SO THAT MOWING WOULD NOT BE REQUIRED IN THE BACKYARD AREAS. THIS CAN ALSO BE MULCH. DO NOT USE WEED BARRIER UNDER MULCH.
  4. PLAN SHOWS PERIMETER FENCING 6" HIGH.
  5. SOME AREAS ON NORTH FACING HOMES MAY BE IN ALL DAY SHADE. USE PLANTS SHOWN ON THE SHADE TOLERANT PLANT LIST.
  6. SOME AREAS IN NARROW YARDS CAN BE MULCHED, IF NOT IN SUN.
  7. WHEN PLANTING CANOPY TREES IN BRASSY AREAS, PLEASE ALLOW A MIN OF 6' DIA. CIRCLE FOR MULCH ONLY AROUND TREE AS GRASS COMPETES WITH TREES ROOTS AND MAKES IT DIFFICULT FOR THE GRASS TO BE MAINTAINED WITHOUT DAMAGING THE TREE.
  8. IN SOME AREAS MULCH CAN BE THE ONLY GROUND COVER, FOR EASE OF MAINTENANCE. DO NOT USE WEED BARRIER UNDER MULCH.
  9. SOME ENTRY'S ARE SPACIOUS ENOUGH TO ALLOW FOR THE ADDITION OF A WELCOMING BENCH AT THE FRONT DOOR.

- LEGEND**
- ST SMALL TREES
  - P LARGE PALM
  - DP DECORATIVE SMALL PALM
  - CT CANOPY TREE
  - TFT TALL FLOWERING TREES
  - SFT SMALL FLOWERING TREES
  - SET SMALL EVERGREEN TREES
  - SA SEASONAL ACCENT FLOWERS
  - SS SMALL SHRUBS-FLOWERING
  - SES SMALL EVERGREEN SHRUBS
  - TBS TALL BUFFER SHRUBS
  - OG ORNAMENTAL GRASSES
  - GC SUN TOLERANT GROUND COVERS
  - SGC SHADE TOLERANT GROUND COVERS
  - V VINES

**DESIGN COMMENTS:  
RESIDENTIAL TYPE-A CORNER LOT**

This is a study for a typical corner lot. Keep in mind some of these lots may face in various directions causing the plant selections needing to be modified with shade tolerant or sun tolerant plantings, accordingly. This lot is shown with a fence around the rear yard and adjacent to another lot with a residential structure on a 5' setback.

Various combinations can be made with shifting open space areas and landscape beds depending on the arrangement of the pool and patio areas. Emphasis is placed on adding larger trees to the available open spaces to create shade for the residence from the prevailing western sun and for creating a streetscape along the street.

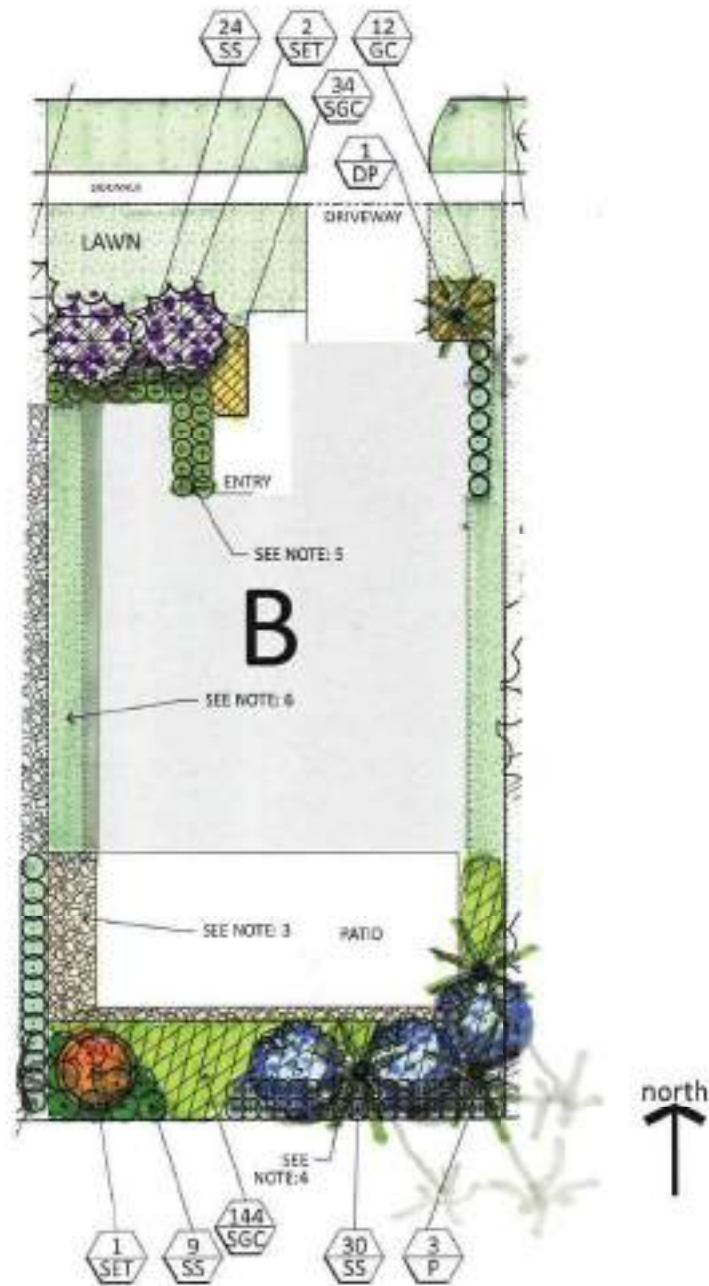
**RESIDENTIAL TYPE: A**

ID	QUAN	TYPE	ESTIMATED AVERAGE RETAIL	ESTIMATED TOTAL RETAIL
ST		SMALL TREES	\$225.00	\$0.00
P	9	LARGE PALM	\$1,500.00	\$13,500.00
DP	3	DECORATIVE SMALL PALM	\$250.00	\$750.00
CT	2	CANOPY TREE	\$350.00	\$700.00
TFT	2	TALL FLOWERING TREES	\$350.00	\$700.00
SFT	1	SMALL FLOWERING TREES	\$250.00	\$250.00
SET	1	SMALL EVERGREEN TREES	\$250.00	\$250.00
SA		SEASONAL ACCENT FLOWERS	\$15.00	\$0.00
SS	49	SMALL SHRUBS-FLOWERING	\$16.00	\$784.00
SES		SMALL EVERGREEN SHRUBS	\$18.00	\$0.00
TBS	50	TALL BUFFER SHRUBS	\$18.00	\$900.00
OG	35	ORNAMENTAL GRASSES	\$15.00	\$525.00
GC	176	SUN TOLERANT GROUND COVERS	\$6.00	\$1,056.00
SGC		SHADE TOLERANT GROUND COVERS	\$6.00	\$0.00
V		VINES	\$16.00	\$0.00
	14	STEPPING STONES	\$10.00	\$140.00
	2.5	CU YRDS GRAVEL	\$60.00	\$150.00
	21.1	CU YRDS MULCHING FOR ITEMS SHOWN:	\$60.00	\$1,265.00

NOT INSTALLED - RETAIL SUBTOTAL: \$20,970.00

DOES NOT INCLUDE INSTALLATION, WARRANTY OR DEMOLITION OF EXISTING SOD TO INSTALL PLANTINGS





**DESIGN NOTES:**

1. STEPPING STONES SHOWN AS 18" SQUARES SPACED ON COMPACTED SUBGRADE, FILL IN BETWEEN WITH 3/4" GRAVEL.
2. SHOWN AS 5" THICK GRAVEL PLACED ON GEO-TEXTILE FABRIC (WEED BARRIER). THIS IS FOR AREAS IN BETWEEN STRUCTURES THAT HAVE 5' SETBACKS AND SUN WILL NOT REACH THESE AREAS. DO NOT USE WOOD BARRIER UNDER MULCH.
3. THIS IS SHOWN AS 3" THICK GRAVEL PLACED ON GEO-TEXTILE FABRIC (WEED BARRIER) ALONG POOL EDGE AND IN BACKYARD SO THAT MOWING WOULD NOT BE REQUIRED IN THE BACKYARD AREAS. THIS CAN ALSO BE MULCH. DO NOT USE WOOD BARRIER UNDER MULCH.
4. PLAN SHOWS PERIMETER FENCING 6" HIGH.
5. SOME AREAS ON NORTH FACING HOMES MAY BE IN ALL DAY SHADE. USE PLANTS SHOWN ON THE SHADE TOLERANT PLANT LIST.
6. SOME AREAS IN NARROW YARDS CAN BE MULCHED, IF NOT IN SUN.
7. WHEN PLANTING CANOPY TREES IN GRASSY AREAS, PLEASE ALLOW A MIN OF 6" DIA. CIRCLE FOR MULCH ONLY AROUND TREE, AS GRASS COMPETES WITH TREE ROOTS AND MAKES IT DIFFICULT FOR THE GRASS TO BE MAINTAINED WITHOUT DAMAGING THE TREE.
8. IN SOME AREAS MULCH CAN BE THE ONLY GROUND COVER. FOR EASE OF MAINTENANCE, DO NOT USE WOOD BARRIER UNDER MULCH.
9. SOME ENTRIES ARE SPACIOUS ENOUGH TO ALLOW FOR THE ADDITION OF A WELCOMING BENCH AT THE FRONT DOOR.

**LEGEND**

- ST SMALL TREES
- P LARGE PALM
- DP DECORATIVE SMALL PALM
- CT CANOPY TREE
- TFT TALL FLOWERING TREES
- SFT SMALL FLOWERING TREES
- SET SMALL EVERGREEN TREES
- SA SEASONAL ACCENT FLOWERS
- SS SMALL SHRUBS-FLOWERING
- SES SMALL EVERGREEN SHRUBS
- TBS TALL BUFFER SHRUBS
- OG ORNAMENTAL GRASSES
- GC SUN TOLERANT GROUND COVERS
- SGC SHADE TOLERANT GROUND COVERS
- V VINES

**DESIGN COMMENTS:  
RESIDENTIAL TYPE-B INSIDE LOT**

A typical inside lot. This lot is shown with a fence at the rear yard, adjacent to two other lots with residential structures on a 5' setback. This particular arrangement I show with heavy landscaping and minimal sod. The backyard has no sodded areas. It is featured with a patio and gravel along the edge to minimize maintenance along screen enclosures. This is not showing any canopy trees due to the minimal space in the front and rear yards.

Keep in mind some of these lots may face in various directions causing the plant selections needing to be modified, with shade tolerant or sun tolerant plantings accordingly.

**RESIDENTIAL TYPE: B**

ID	QUAN	TYPE	ESTIMATED AVERAGE RETAIL	ESTIMATED TOTAL RETAIL
ST		SMALL TREES	\$225.00	\$0.00
P	3	LARGE PALM	\$1,500.00	\$4,500.00
DP	1	DECORATIVE SMALL PALM	\$250.00	\$250.00
CT		CANOPY TREE	\$350.00	\$0.00
TFT		TALL FLOWERING TREES	\$350.00	\$0.00
SFT		SMALL FLOWERING TREES	\$250.00	\$0.00
SET	3	SMALL EVERGREEN TREES	\$250.00	\$750.00
SA		SEASONAL ACCENT FLOWERS	\$15.00	\$0.00
SS	63	SMALL SHRUBS-FLOWERING	\$16.00	\$1,008.00
SES		SMALL EVERGREEN SHRUBS	\$18.00	\$0.00
TBS		TALL BUFFER SHRUBS	\$18.00	\$0.00
OG		ORNAMENTAL GRASSES	\$15.00	\$0.00
GC	12	SUN TOLERANT GROUND COVERS	\$6.00	\$72.00
SGC	178	SHADE TOLERANT GROUND COVERS	\$6.00	\$1,068.00
V		VINES	\$16.00	\$0.00
		STEPPING STONES	\$10.00	\$0.00
	14.6	CU YRDS MULCHING FOR ITEMS SHOWN:	\$60.00	\$878.33

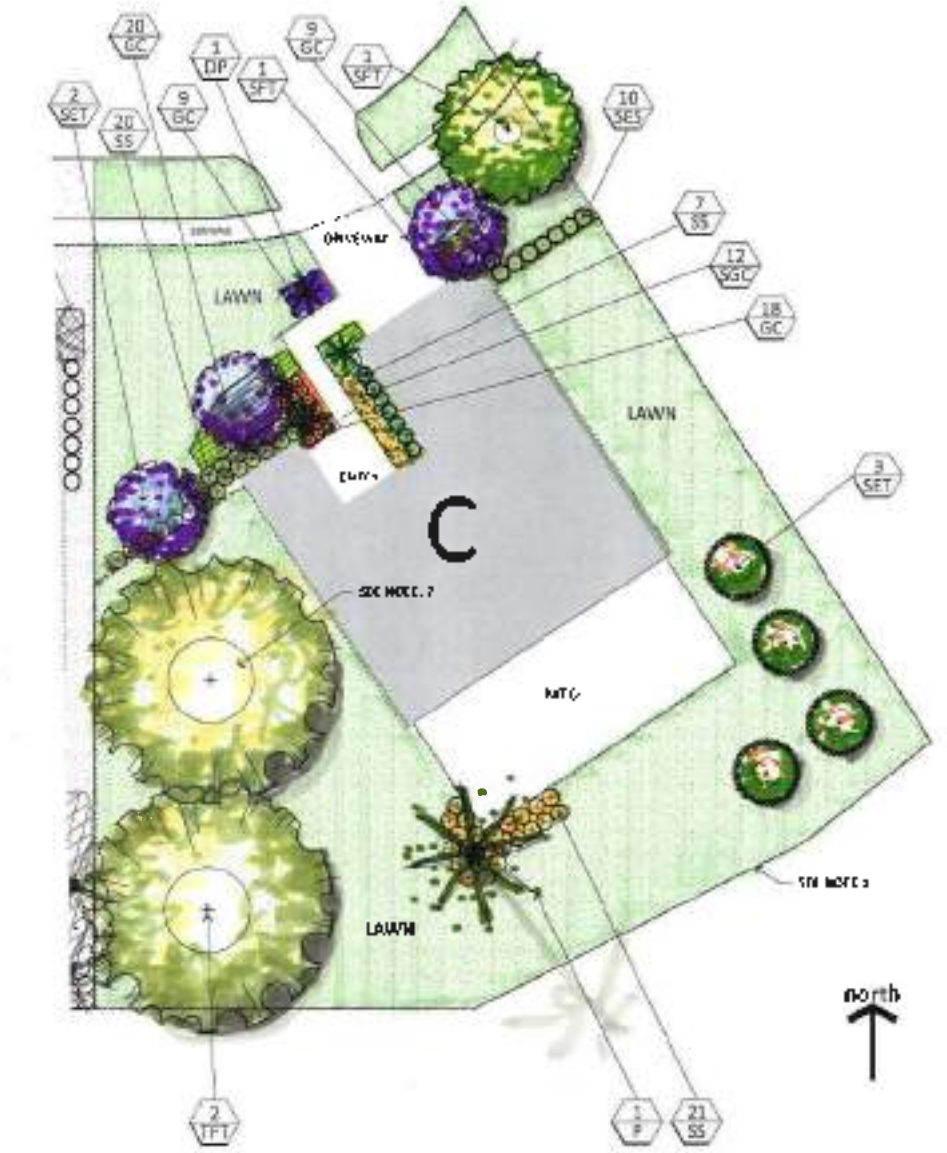
NOT INSTALLED - RETAIL SUBTOTAL: \$8,526.33

DOES NOT INCLUDE INSTALLATION, WARRANTY OR DEMOLITION OF EXISTING SOD TO INSTALL PLANTINGS

DESIGN COMMENTS:  
**RESIDENTIAL TYPE-C PIE-SHAPED LOT**

A typical Trapezoidal-Pie-Shaped lot. This lot is shown with a fence at the rear yard, adjacent to two other lots with the other residential structures on a 5' setback. This particular arrangement features heavy front yard landscaping and minimal backyard landscape - to maximize open play space. The backyard has only one landscape bed for minimal maintenance. This example is shown with a patio and accent trees, but no perimeter buffer shrubs. This would be applicable if the lot had no other residential areas in the rear of the lot. This lot is showing some canopy trees due to the available space. The canopy trees are on the west side to maximize shade from the afternoon sun.

Keep in mind some of these lots may face in various directions causing the plant selections needing to be modified, with shade tolerant or sun tolerant plantings accordingly, as well as shifting of the canopy trees to assist in cooling the house from afternoon sun in the west.



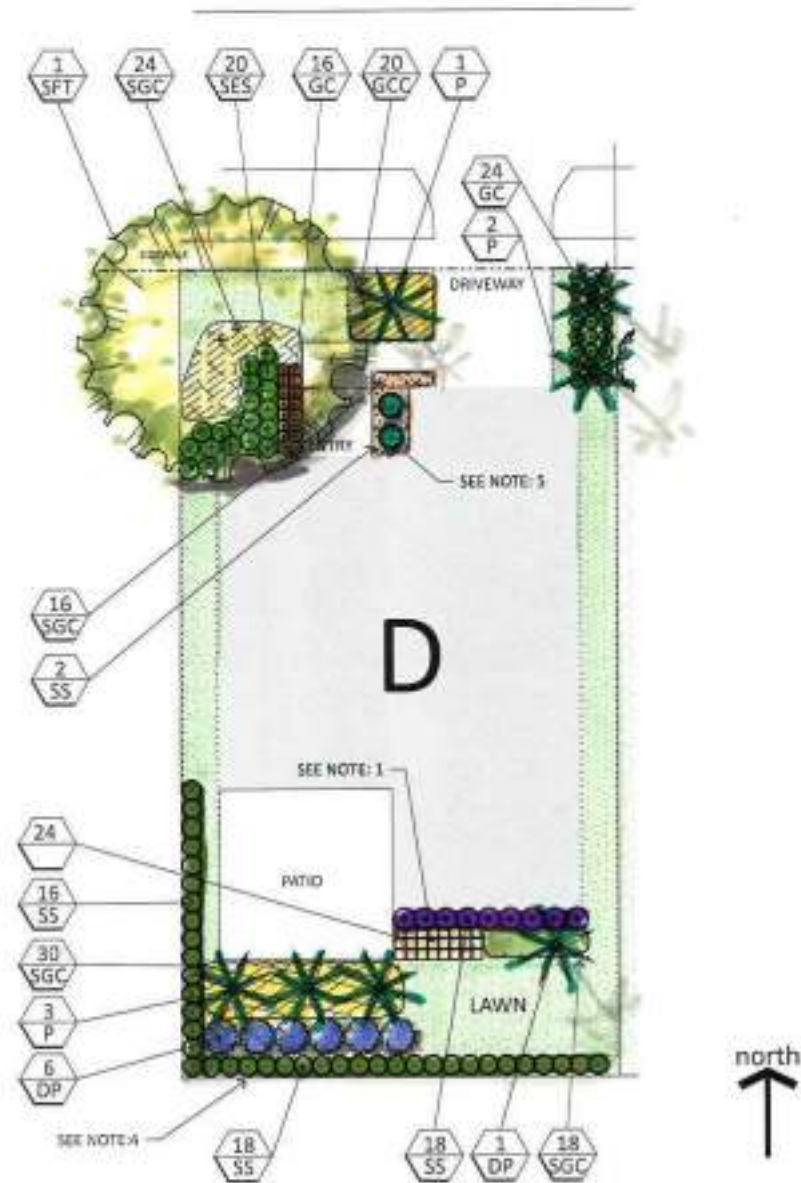
- DESIGN NOTES:**
1. SEE SPECIFICATIONS FOR ALL PLANTINGS AND MATERIALS TO BE USED IN THIS PLAN.
  2. ALL PLANTINGS TO BE INSTALLED WITHIN THE SPECIFIED SETBACKS AND MAINTAINED AS SUCH.
  3. THE PLANTINGS TO BE INSTALLED WITHIN THE SPECIFIED SETBACKS AND MAINTAINED AS SUCH.
  4. THE PLANTINGS TO BE INSTALLED WITHIN THE SPECIFIED SETBACKS AND MAINTAINED AS SUCH.
  5. THE PLANTINGS TO BE INSTALLED WITHIN THE SPECIFIED SETBACKS AND MAINTAINED AS SUCH.
  6. THE PLANTINGS TO BE INSTALLED WITHIN THE SPECIFIED SETBACKS AND MAINTAINED AS SUCH.
  7. THE PLANTINGS TO BE INSTALLED WITHIN THE SPECIFIED SETBACKS AND MAINTAINED AS SUCH.
  8. THE PLANTINGS TO BE INSTALLED WITHIN THE SPECIFIED SETBACKS AND MAINTAINED AS SUCH.
  9. THE PLANTINGS TO BE INSTALLED WITHIN THE SPECIFIED SETBACKS AND MAINTAINED AS SUCH.
  10. THE PLANTINGS TO BE INSTALLED WITHIN THE SPECIFIED SETBACKS AND MAINTAINED AS SUCH.
- LEGEND:**
- SF SMALL TREES
  - P LARGE PALM
  - DP DECORATIVE SMALL PALM
  - CT CANOPY TREE
  - TFT TALL FLOWERING TREES
  - SFT SMALL FLOWERING TREES
  - SET SMALL EVERGREEN TREES
  - SA SEASONAL ACCENT FLOWERS
  - SS SMALL SHRUBS-FLOWERING
  - SES SMALL EVERGREEN SHRUBS
  - TBS TALL BUFFER SHRUBS
  - OG ORNAMENTAL GRASSES
  - GC 56 SUN TOLERANT GROUND COVERS
  - SGC 12 SHADE TOLERANT GROUND COVERS
  - V VINES
  - 8.2 CU YRDS MULCHING FOR ITEMS SHOWN

**RESIDENTIAL TYPE: C**

ID	QUAN	TYPE	ESTIMATED AVERAGE RETAIL	ESTIMATED TOTAL RETAIL
ST		SMALL TREES	\$225.00	\$0.00
P	1	LARGE PALM	\$1,500.00	\$1,500.00
DP	1	DECORATIVE SMALL PALM	\$250.00	\$250.00
CT		CANOPY TREE	\$350.00	\$0.00
TFT	2	TALL FLOWERING TREES	\$350.00	\$700.00
SFT	2	SMALL FLOWERING TREES	\$250.00	\$500.00
SET	5	SMALL EVERGREEN TREES	\$250.00	\$1,250.00
SA		SEASONAL ACCENT FLOWERS	\$15.00	\$0.00
SS	48	SMALL SHRUBS-FLOWERING	\$16.00	\$768.00
SES	10	SMALL EVERGREEN SHRUBS	\$18.00	\$180.00
TBS		TALL BUFFER SHRUBS	\$18.00	\$0.00
OG		ORNAMENTAL GRASSES	\$15.00	\$0.00
GC	56	SUN TOLERANT GROUND COVERS	\$6.00	\$336.00
SGC	12	SHADE TOLERANT GROUND COVERS	\$6.00	\$72.00
V		VINES	\$16.00	\$0.00
		STEPPING STONES	\$10.00	\$0.00
	8.2	CU YRDS MULCHING FOR ITEMS SHOWN:	\$60.00	\$491.67

NOT INSTALLED - RETAIL SUBTOTAL: \$6,047.67  
 DOES NOT INCLUDE INSTALLATION, WARRANTY OR DEMOLITION OF EXISTING SOD TO INSTALL PLANTINGS





**DESIGN NOTES:**

1. STEPPING STONES SHOWN AS 18" SQUARES SPACED ON COMPACTED SUBGRADE, FILL IN BETWEEN WITH 1/4" GRAVEL.
2. SHOWN AS 3" THICK GRAVEL PLACED ON GEO-TEXTILE FABRIC (WEED BARRIER). THIS IS FOR AREAS IN BETWEEN STRUCTURES THAT HAVE 0' SETBACKS AND SUN WILL NOT REACH THESE AREAS. DO NOT USE WEED BARRIER UNDER MULCH.
3. THIS IS SHOWN AS 3" THICK GRAVEL PLACED ON GEO-TEXTILE FABRIC (WEED BARRIER) ALONG POOL EDGE AND IN BACKYARD SO THAT MOWING WOULD NOT BE REQUIRED IN THE BACKYARD AREAS. THIS CAN ALSO BE MULCH. DO NOT USE WEED BARRIER UNDER MULCH.
4. PLAN SHOWS PERIMETER FENCING 6' HIGH.
5. SOME AREAS ON NORTH FACING HOMES MAY BE IN ALL DAY SHADE. USE PLANTS SHOWN ON THE SHADE TOLERANT PLANT LIST.
6. SOME AREAS IN NARROW YARDS CAN BE MULCHED, IF NOT IN SUN.
7. WHEN PLANTING CANOPY TREES IN GRASSY AREAS, PLEASE ALLOW A MIN OF 6' DIA. CIRCLE FOR MULCH ONLY AROUND TREE, AS GRASS COMPETES WITH TREES ROOTS AND MAKES IT DIFFICULT FOR THE GRASS TO BE MAINTAINED WITHOUT DAMAGING THE TREE.
8. IN SOME AREAS MULCH CAN BE THE ONLY GROUND COVER, FOR EASE OF MAINTENANCE. DO NOT USE WEED BARRIER UNDER MULCH.
9. SOME ENTRY'S ARE SPACIOUS ENOUGH TO ALLOW FOR THE ADDITION OF A WELCOMING BENCH AT THE FRONT DOOR.

**LEGEND**

- ST SMALL TREES
- P LARGE PALM
- DP DECORATIVE SMALL PALM
- CT CANOPY TREE
- TFT TALL FLOWERING TREES
- SFT SMALL FLOWERING TREES
- SET SMALL EVERGREEN TREES
- SA SEASONAL ACCENT FLOWERS
- SS SMALL SHRUBS FLOWERING
- SES SMALL EVERGREEN SHRUBS
- TBS TALL BUFFER SHRUBS
- OG ORNAMENTAL GRASSES
- GC SUN TOLERANT GROUND COVERS
- SGC SHADE TOLERANT GROUND COVERS
- V VINES

**DESIGN COMMENTS:  
RESIDENTIAL TYPE-D INSIDE LOT**

A typical inside lot. This lot is shown with a fence at the rear yard, adjacent to two other lots with the other residential structures on a 5' setback. This particular arrangement features moderate front yard landscaping and minimal back-yard landscape - due to the pool and patio shown. The back-yard has only a row of small trees (could also be palms) for minimal maintenance. There are only small trees due to the small size of the lot. There are plantings at the front door along with a bench for seating, while arriving or departing, or visiting with neighbors. Areas in the shade between houses are shown with gravel, since they cannot be planted for lack of light.

Keep in mind some of these lots may face in various directions causing the plant selections needing to be modified, with shade tolerant or sun tolerant plantings accordingly, as well as shifting of the canopy trees to assist in cooling the house from afternoon sun in the west.

**RESIDENTIAL TYPE: D**

ID	QUAN	TYPE	ESTIMATED AVERAGE RETAIL	ESTIMATED TOTAL RETAIL
ST		SMALL TREES	\$225.00	\$0.00
P	6	LARGE PALM	\$1,500.00	\$9,000.00
DP	7	DECORATIVE SMALL PALM	\$250.00	\$1,750.00
CT		CANOPY TREE	\$350.00	\$0.00
TFT		TALL FLOWERING TREES	\$350.00	\$0.00
SFT	1	SMALL FLOWERING TREES	\$250.00	\$250.00
SET		SMALL EVERGREEN TREES	\$250.00	\$0.00
SA		SEASONAL ACCENT FLOWERS	\$15.00	\$0.00
SS	54	SMALL SHRUBS FLOWERING	\$16.00	\$864.00
SES	20	SMALL EVERGREEN SHRUBS	\$18.00	\$360.00
TBS		TALL BUFFER SHRUBS	\$18.00	\$0.00
OG		ORNAMENTAL GRASSES	\$15.00	\$0.00
GC	60	SUN TOLERANT GROUND COVERS	\$6.00	\$360.00
SGC	88	SHADE TOLERANT GROUND COVERS	\$6.00	\$528.00
V		VINES	\$16.00	\$0.00
	24	STEPPING STONES	\$10.00	\$240.00
	14.1	CU YRDS MULCHING FOR ITEMS SHOWN	\$60.00	\$843.33

NOT INSTALLED - RETAIL SUBTOTAL: \$14,195.33

DOES NOT INCLUDE INSTALLATION, WARRANTY OR DEMOLITION OF EXISTING SOD TO INSTALL PLANTINGS



**DESIGN NOTES:**

1. STEPPING STONES SHOWN AS 16" SQUARES SPACED ON COMPACTED SUBGRADE, FILL IN BETWEEN WITH 1/2" GRAVEL.
2. SHOWN AS 3" THICK GRAVEL PLACED ON GEO-TEXTILE FABRIC (WEED BARRIER). THIS IS FOR AREAS IN BETWEEN STRUCTURES THAT HAVE 5' SETBACKS AND SUN WILL NOT REACH THESE AREAS. DO NOT USE WEED BARRIER UNDER MULCH.
3. THIS IS SHOWN AS 3" THICK GRAVEL PLACED ON GEO-TEXTILE FABRIC (WEED BARRIER) ALONG POOL EDGE AND IN BACKYARD SO THAT MOWING WOULD NOT BE REQUIRED IN THE BACKYARD AREAS. THIS CAN ALSO BE MULCH. DO NOT USE WEED BARRIER UNDER MULCH.
4. PLAN SHOWS PERIMETER FENCING 6" HIGH.
5. SOME AREAS ON NORTH FACING HOMES MAY BE IN ALL DAY SHADE. USE PLANTS SHOWN ON THE SHADE TOLERANT PLANT LIST.
6. SOME AREAS IN NARROW YARDS CAN BE MULCHED, IF NOT IN SUN.
7. WHEN PLANTING CANOPY TREES IN GRASSY AREAS, PLEASE ALLOW A MIN OF 4' DIA CIRCLE FOR MULCH ONLY AROUND TREE, AS GRASS COMPETES WITH TREE'S ROOTS AND MAKES IT DIFFICULT FOR THE GRASS TO BE MAINTAINED WITHOUT DAMAGING THE TREE.
8. IN SOME AREAS MULCH CAN BE THE ONLY GROUND COVER, FOR EASE OF MAINTENANCE DO NOT USE WEED BARRIER UNDER MULCH.
9. SOME ENTRY'S ARE SPACIOUS ENOUGH TO ALLOW FOR THE ADDITION OF A WELCOMING BENCH AT THE FRONT DOOR.

**LEGEND**

- ST SMALL TREES
- P LARGE PALM
- DP DECORATIVE SMALL PALM
- CT CANOPY TREE
- TFT TALL FLOWERING TREES
- SFT SMALL FLOWERING TREES
- SET SMALL EVERGREEN TREES
- SA SEASONAL ACCENT FLOWERS
- SS SMALL SHRUBS-FLOWERING
- SES SMALL EVERGREEN SHRUBS
- TBS TALL BUFFER SHRUBS
- OG ORNAMENTAL GRASSES
- GC SUN TOLERANT GROUND COVERS
- SGC SHADE TOLERANT GROUND COVERS
- V VINES

**DESIGN COMMENTS:  
RESIDENTIAL TYPE-E INSIDE LOT**

A typical inside lot. This lot is shown with a fence at the rear yard, adjacent to two other lots with the other residential structures on a 5' setback. This particular arrangement is shown with minimal front yard landscaping and minimal backyard landscape - due to the pool and patio shown. The backyard has only a small cluster of trees (could also be palms) for minimal maintenance. There are only small trees due the small size of the lot. There are plantings at the front door along with a bench for seating, while arriving or departing, or visiting with neighbors.

Keep in mind some of these lots may face in various directions causing the plant selections needing to be modified, with shade tolerant or sun tolerant plantings accordingly, as well as shifting of the canopy trees to assist in cooling the house from afternoon sun in the west.

**RESIDENTIAL TYPE: E**

ID	QUAN	TYPE	ESTIMATED AVERAGE RETAIL	ESTIMATED TOTAL RETAIL
ST	1	SMALL TREES	\$225.00	\$225.00
P		LARGE PALM	\$1,500.00	\$0.00
DP	1	DECORATIVE SMALL PALM	\$250.00	\$250.00
CT		CANOPY TREE	\$350.00	\$0.00
TFT		TALL FLOWERING TREES	\$350.00	\$0.00
SFT		SMALL FLOWERING TREES	\$250.00	\$0.00
SET	6	SMALL EVERGREEN TREES	\$250.00	\$1,500.00
SA		SEASONAL ACCENT FLOWERS	\$15.00	\$0.00
SS	18	SMALL SHRUBS-FLOWERING	\$16.00	\$288.00
SES		SMALL EVERGREEN SHRUBS	\$18.00	\$0.00
TBS		TALL BUFFER SHRUBS	\$18.00	\$0.00
OG		ORNAMENTAL GRASSES	\$15.00	\$0.00
GC	19	SUN TOLERANT GROUND COVERS	\$6.00	\$114.00
SGC	20	SHADE TOLERANT GROUND COVERS	\$6.00	\$120.00
V		VINES	\$16.00	\$0.00
		STEPPING STONES	\$10.00	\$0.00
	1.5	CU YRDS GRAVEL	\$60.00	\$90.00
	3.8	CU YRDS MULCHING FOR ITEMS SHOWN:	\$60.00	\$230.00

NOT INSTALLED - RETAIL SUBTOTAL: \$2,817.00

DOES NOT INCLUDE INSTALLATION, WARRANTY OR DEMOLITION OF EXISTING SOD TO INSTALL PLANTINGS





**DESIGN NOTES:**

1. STEPPING STONES SHOWN AS 18" SQUARES SPACED ON COMPACTED SUBGRADE, TIL IN BETWEEN WITH 8" GRAVEL.
2. SHOWN AS 3" THICK GRAVEL PLACED ON GEO-TEXTILE FABRIC (WEED BARRIER). THIS IS FOR AREAS IN BETWEEN STRUCTURES THAT HAVE 5' SETBACKS AND SUN WILL NOT REACH THESE AREAS. DO NOT USE WEED BARRIER UNDER MULCH.
3. THIS IS SHOWN AS 3" THICK GRAVEL PLACED ON GEO-TEXTILE FABRIC (WEED BARRIER) ALONG POOL EDGE AND IN BACKYARD SO THAT MOWING WOULD NOT BE REQUIRED IN THE BACKYARD AREAS. THIS CAN ALSO BE MULCH. DO NOT USE WEED BARRIER UNDER MULCH.
4. PLAN SHOWS PERIMETER FINISH 6" HIGH.
5. SOME AREAS ON NORTH FACING HOMES MAY BE IN ALL DAY SHADE. USE PLANTS SHOWN ON THE SHADE TOLERANT PLANT LIST.
6. SOME AREAS IN NARROW YARDS CAN BE MULCH-ED, IF NOT IN SUN.
7. WHEN PLANTING CANOPY TREES IN GRASSY AREAS, PLEASE ALLOW A MIN OF 6" DIA. HOLE FOR MULCH ONLY AROUND TREE, AS GRASS COMPETES WITH TREE ROOTS AND MAKES IT DIFFICULT FOR THE GRASS TO BE MAINTAINED WITHOUT DAMAGING THE TREE.
8. IN SOME AREAS MULCH CAN BE THE ONLY GROUND COVER. FOR EASE OF MAINTENANCE. DO NOT USE WEED BARRIER UNDER MULCH.
9. SOME ENTRIES ARE SPACIOUS ENOUGH TO ALLOW FOR THE ADDITION OF A WELCOMING BENCH AT THE FRONT DOOR.

**LEGEND**

- ST SMALL TREES
- P LARGE PALM
- DP DECORATIVE SMALL PALM
- CT CANOPY TREE
- TFT TALL FLOWERING TREES
- SFT SMALL FLOWERING TREES
- SET SMALL EVERGREEN TREES
- SA SEASONAL ACCENT FLOWERS
- SS SMALL SHRUBS-FLOWERING
- SES SMALL EVERGREEN SHRUBS
- TBS TALL BUFFER SHRUBS
- OG ORNAMENTAL GRASSES
- GC SUN TOLERANT GROUND COVERS
- SGC SHADE TOLERANT GROUND COVERS
- V VINES

**DESIGN COMMENTS:  
RESIDENTIAL TYPE-F INSIDE LOT**

A typical inside lot. This lot is shown with a fence at the rear yard, adjacent to two other lots with the other residential structures on a 5' setback. This particular arrangement is shown with very minimal front yard landscaping and minimal backyard landscape - due to the pool and patio shown. The backyard has only a small cluster trees for minimal maintenance. These could also be Palms. There are only small trees or palms in the front yard areas, due the small size of the lot. There are plantings at the front door along with a bench for seating, while arriving or departing, or visiting with neighbors.

Keep in mind some of these lots may face in various directions causing the plant selections needing to be modified, with shade tolerant or sun tolerant plantings accordingly, as well as shifting of the trees to assist in cooling the house from afternoon sun in the west.

**RESIDENTIAL TYPE: F**

ID	QUAN	TYPE	ESTIMATED AVERAGE RETAIL
ST		SMALL TREES	\$225.00
P		LARGE PALM	\$1,500.00
DP		DECORATIVE SMALL PALM	\$250.00
CT		CANOPY TREE	\$350.00
TFT		TALL FLOWERING TREES	\$350.00
SFT	6	SMALL FLOWERING TREES	\$250.00
SET		SMALL EVERGREEN TREES	\$250.00
SA		SEASONAL ACCENT FLOWERS	\$15.00
SS	6	SMALL SHRUBS-FLOWERING	\$16.00
SES		SMALL EVERGREEN SHRUBS	\$18.00
TBS		TALL BUFFER SHRUBS	\$18.00
OG		ORNAMENTAL GRASSES	\$15.00
GC	30	SUN TOLERANT GROUND COVERS	\$6.00
SGC	9	SHADE TOLERANT GROUND COVERS	\$6.00
V		VINES	\$16.00
	27	STEPPING STONES	\$10.00
	1.5	CU YRDS GRAVEL	\$60.00
	3.0	CU YRDS MULCHING FOR ITEMS SHOWN:	\$60.00

NOT INSTALLED - RETAIL SUBTOTAL:

DOES NOT INCLUDE INSTALLATION, WARRANTY OR DEMOLITION OF EXISTING SOD TO INSTALL PLAN



# FAWN RIDGE PROTOTYPICAL PLANTING PLANS

## PLANTING LIST

CITRUS PARK, FLORIDA  
Terra Tectonics design group international, inc. 727-441-4504

PLAN IDEN.	ABREV.	COMMON NAME	BOTANICAL NAME:	COMMENTS:
<b>(ST) SMALL TREES</b>				
AZT	Azalea Tree	Rhododendron indica Standard		Great for shade - needs water and acidic soils
BGT	Bougainvillea -Standard	BOUGAINVILLEA purple - Standard		Great for sun- dwarf's make good ground covers but is not cold tolerant -has thorns
CMT	Calamondin Tree	CITROFORTUNELLA microcarpa		Nice season small orange fruits
ICH	Oak-Leaf Holly	ILEX-hybrid, 'cona' Oak Leaf P.P.#0487		Great hardy conical shaped small tree/shrub
IVP	Weeping Yaupon	ILEX vomitoria pendula		Interesting 'Halloween' grayish sweeping native tree.
CBT	White Geiger Tree	CORDIA bossier		Great year round white flowers -small tree
<b>(P) PALMS - LARGE PALMS - PLANT A MIN OF 10' ON CENTERS</b>				
BN	Bismarck Palm	BISMARCKIA nobilis		Needs a large space - 15' diameter
LC	Chinese Fan Palm	LIVISTONA chinensis		Nice bright green leaves - messy dates
LD	Ribbon Palm	LIVISTONA decipiens		Thin fronds blow in slight breeze
SP	Sabal Palm*	SABAL palmetto		Florida Native State Tree - suitable for naturalized type landscapes
WB	Fox Tail Palm	WODYETIA bifurcata		Might not be cold hardy - but very tropical looking
<b>(DP) SMALL DECORATIVE PALMS - FRONT DOOR AREAS - SIDE YARDS:</b>				
CH	European Fan Palm	CHAMAEROPS humilis		Small hardy, cold tolerant palm for small areas -low growing, but 4' in dia.
CB	Chamodorea Palm	CHAMAEDORIA seifrizii 'Florida hybrid'		Good for shady areas - 6' tall ornamental palm
CE	Bamboo Palm	CHAMAEDOREA erumpens		Good for shady areas - 6' tall ornamental palm
PR	Pygmy Date Palm	PHOENIX roebelenii		Beautiful small palm -can be had in triple trunk clusters - be careful of sharp thorns at frond bases.
REX	Lady Palm	RHAPIS excelsa		Only use in shade - makes nice buffer or wall cover
<b>(CT) CANOPY TREES (NEEDS LARGE OPEN YARD - PLANT MIN 25' ON CENTER)</b>				
BN	Fiver Birch	BETULA nigra		Good for damp areas - good buffer, thin and tall
QV	Live Oak	QUERCUS virginiana		Large majestic long lived tree. Needs lots of space 50' diameter.
QVH	Highbush Live Oak	QUERCUS virginiana 'Highbush'		Large majestic long lived tree. Not as wide as standard Live Oak
QVB	Boardwalk Live Oak	QUERCUS virginiana 'Boardwalk'		Large majestic long lived tree. More spreading habit - consistent uniform appearance
MGL	Southern Magnolia	MAGNOLIA grandiflora 'Little Gem'		Smaller leaves - stills grows as large as other Magnolia's
MG	Southern Magnolia	MAGNOLIA grandiflora 'Blanchard'		Bright brown/leaf backs
TD	Autumn Gold Cypress	TAXODIUM distichum 'Sofine' 'Autumn Gold'		Great Native tree - very tolerant - grows very tall
UA	Winged Elm	ULMUS alata		Nice medium sized native tree- deciduous
UPA	Alee Elm	ULMUS parvifolia 'Alee'		Very uniformly shaped deciduous small tree

### (TFT) TALL FLOWERING TREES - [ALLOW FOR 35' ON CENTERS - NEEDS A LARGE OPEN SPACE]

CS	Silk Floss Tree	CHORISIA speciosa	Dangerous thorns on trunk but beautiful pink flowers - put in area not accessible to children
CS	Pellaphorum	PELTAPHORUM	Large canopy tree that flowers for an entire month at end of summer. Florida Native

### (SFT) SMALL FLOWERING TREES - SIDE YARDS FRONT DOOR AREAS:

BPT	Yesterday, Today, and Tomorrow Standard	BRUNSFELSIA pauciflora standard	Great ornamental flowering shrub
CC	Redbud	CERCIS canadensis	great as an understory or shady area
EJ	Loquat	ERIOBOTRYA japonica	Great small fruiting tree - cold tolerant
LI	Crape Myrtle	LAGERSTROMIA x fauriei 'Tuskegee' Standard	Dark Purple flowers
LI	Crape Myrtle 'Watermelon Red'	LAGERSTROMIA indica 'Watermelon Red'	Red flowers - prune back after summer - if wanting to maintain small size
LJ	Ligustrum Tree	LIGUSTRUM japonicum	Evergreen small umbrella shaped tree
SB	Winter Cassia	SENNA bicapsularis	Winter yellow flowering small but messy tree - keep stems tied
SP	Desert Cassia	SENNA polyphylla	Small long stem flowering always in bloom.
TC	Yellow Tabebuia	TABEBULIA chrysostricha	Beautiful yellow flowering small trees - needs watering
TI	Purple Trumpet	TABEBULIA impetiginosa	Beautiful small purple flowering small trees - needs watering

### (SET) SMALL EVERGREEN TREES:

EOC	Japanese Blueberry	ELEOCARPUS decipiens	Beautiful dark green leaf - small tree
IC	Dahoon Holly	ILEX cassine	Beautiful berries in winter - needs acidic soils
JC	Spartan Juniper	JUNIPERUS chinensis 'Spartan'	Tall shapely evergreen accent - gets large
VOO	Walters Viburnum Standard	VIBURNUM obovatum standard	Small decorative dark green leaf tree - Native Plant

### (SA) SEASONAL ACCENT FLOWERS

BD	Butterfly Bush	BUDDLIA davidii	Fun for kids butterfly gardens - but needs room and is messy
BP	Yesterday, Today, and Tomorrow Standard	BRUNSFELSIA pauciflora standard	Small flowering shrub - very nice flower color lavender to purple to white

### (SS) SMALL SHRUBS - FLOWERING - PLANT NO CLOSER THAN 24" ON CENTERS

BG	Bougainvillea	BOUGAINVILLEA purple	Needs space to spread - needs to be pruned several times a year and has thorns!
CA	Beautyberry	CALLICARPA americana	Nice native for buffer areas - leggy
CF	Holly Fern	CYRTOMIUM falcatum	Excellent for shade -will not tolerate any sun
FB	Feijoa -Pineapple Guava	ACCA sellowiana	Cold hardy - flowering gray green shrub
GJ	Gardenia	GARDENIA Jasminoides 'Veitchi'	Needs to be a grafted specimen - fragrant white flowers -single specimens - grows to 4' in dia.
GJ	Gardenia Standard	GARDENIA Jasminoides 'Miami Supreme'	Needs to be a grafted specimen - fragrant white flowers -single specimens - grows to 4' in dia.
HM	Dwarf Firebush	HAMELIA macrantha	Dwarf! - 30" ht - flowers most of the year
IF	Florida Anise	ILLICIUM floridanum	Good for shady areas only - upright hedge
KR	Knockout Rose	ROSA spp.	Durable reliable pest resistant flowering shrub
PA	Plumbago -Imperial Blue'	PLUMBAGO auriculata	Blue flowers look good. But needs yearly pruning to reduce woodiness
PN	Wild Coffee	PSYCHOTRIA nervosa	excellent native for shady areas
AZ	Shell Ginger	ALPINIA zerumpet	Great for shady areas - bright green leaves and flowers
LC	Lorapetalum	LOROPETALUM chinensis	Nice for acidic soil areas only - purple flowers
IX	Dw Orange Ixora	IXORA chinensis - 'orange'	Year round color - may need cold protection

**(SES) SMALL EVERGREEN SHRUBS:**

JP	Parsoni Juniper	JUNIPERUS parsoni	Good evergreen - low growing and spreading
RI	India Hawthorn	RHAPHIOLEPIS indica	Boring but useful small shrub
ICB	Dwarf Burford Holly	ILEX cornuta 'Dwarf Burford'	Small dark green - thorny tips.
IS	Schilling's Dwarf	ILEX vomitoria 'Schilling's Dwarf'	Stable native - not exciting but durable
ZP	Cocotie	ZAMIA pumila	Durable dark green - prehistoric type plant - Florida native

**(TBS) TALL BUFFER SHRUBS - 36" ON CENTER - NEEDS SPACE ALONG FENCES**

AW	Awabuki Viburnum	VIBURNUM awabuki	Glossy large leaves - cold tolerant - grown large and dense
MC	Wax Myrtle	MYRICA cerifera	Only for buffer areas - short-lived native
MF	Simpson's Stopper	MYRCIANTHES fragrans	Good for sheared hedges evergreen
OF	Sweet/Tea Olive	OSMANTHUS fragrans	Nice fragrant - cold tolerant native
VO	Walters Viburnum 'Withlacoochee'	VIBURNUM obovatum	Excellent tall shrub or select ones pruned into tree form.

**(OG) ORNAMENTAL GRASSES: NEEDS SPACE TO GROW OUT, DO NOT CUT BACK - ALLOW TO GROW - SEASONAL BLOOMS**

MCP	Gulf Muhly Grass	MUHLENBERGIA capillaris	Seasonal purple flowers - nice beachy look
CP	Dw. Pampas Grass	CORTEDARIA pumila	White Plumes - only grows to 4'-5' - other colors now available

**(GC) SUN TOLERANT GROUNDCOVERS:**

EG	Blue Daze	EVOLVULUS glomeatus	
DT	Variegated Flax Lily	DIANELLA tasmanica 'variegata'	
DGM	Golden Mound Duranta	DURANTA erecta 'Golden Mound'	Small yellow-golden shrub - will need pruning to maintain small size
GP	Gaillardia -Blanket Flower	GAILLARDIA pulchella	Excellent native flower -annuals will reseed themselves.
LME	Liriope	LIRIOPE muscari 'Emerald Goddess' Rode	Good shade tolerant ground cover - this variety is the best performer
LMV	Purple Trailing Lantana	LANTANA montevidensis	Intense purple flowers, but short lived.
PL	Pentas	PENTAS lanceolata	Good annuals - live almost a year. Red flowers

**(SGC) SHADE TOLERANT GROUND COVERS:**

AG	Lilly of the Nile	AGAPANTHUS africanus	Needs semi-shade to do well
IMP	Impatiens	Impatiens Mixed colors	Annuals for shady areas - needs watering
GZ	Bromeliad	Numerous types	Great for shaded areas -some will tolerate sun
LM	Liriope 'Emerald Goddess'	LIRIOPE muscari 'Emerald Goddess'	
OP	Black Mondo Grass	OPHIPOGON planiscapus 'Nigrescens'	
OJ	Mondo Grass	OPHIPOGON japonicus	Good for shaded areas only
PX	Xanadu Philodendron	PHILODENDRON spp x Xanadu'	Good shade tolerant small shrub
PP	Dw Asian Jasmine	TRACHELOSPERMUM asiaticum	Nice ground cover for semi-shaded areas - will do well in sun if it gets enough water
SW	Peace Lily	SPATHIPHYLLUM wallisii	Great for shade only - not too cold tolerant
SRR	Bird of Paradise	STRELTZIA reginae	Beautiful flowering accent plant -needs space.
TA	Asian Jasmine 'Tricolor'	TRACHELOSPERMUM asiaticum 'Tricolor'	Variegated small leaf ground cover, cold tolerant.

**(V) VINES: - 36" ON CENTERS - FIX TO FENCE OR WALLS**

FP	Creeping Fig	FICUS Pumila	Sucker feet - not twining - Excellent for growing on Stucco walls to hide them - will need pruning once a year to keep them close - 3' on center
TJT	Confederate Jasmine	TRACHELOSPERMUM jasminoides	Fix on trellis, tie to fence - twining vine

**SOD FOR OPEN LAWN AREAS:**

SF	EMPIRE' Zoysia	ZOYSIA japonica	Excellent cultivar - durable-pest resistant - lower water consumption and issues that St Augustine - highly recommended.
SF	St. Augustine 'Florata'		The standard bearer for a long time - but requires lots of water and is susceptible to cinch bugs, fungus, sod webworms and isn't drought tolerant. Good for shady areas, but don't overfertilize.
SOD	Bahia	PASPALUM notatum	Standard pasture grass - Needs constant mowing

**DO NOT RECOMMEND LIST - TREES, PALMS AND SHRUBS:**

Queen Palm	Susceptible to fungus and bacteria, and not cold hardy
Washingtonian Palm	Rapidly grows 2' a year to outgrow the property
White fountain grass	Florida invasive species
Nandina	Florida invasive species
Sycamore	Oversized leaves - outgrows a yard space -very messy
Pines	dangerous - cones fall from very tall trunks - messy needles
Oleander	Not cold hardy - pest issues - poisonous
Ligustrum hedges	Outgrows the space rapidly - always needs pruning
Sweet Viburnum	Outgrows the space rapidly - always needs pruning
Norfolk Island Pine	Non-native -outgrows the yard very quickly and becomes a hazard tree.
Mexican Petunia	Once you plant its there forever - it will spread throughout the entire garden.



**Selected List of Small Trees - Flowering and Evergreen**



Weeping Yaupon Holly (IVP)



Spartan Juniper (JT)



Japanese Blueberry (ED)



Dahoon Holly (IC)



Muskogee Crepe Myrtle 'standard' (LIM)



Dynamite Crepe Myrtle 'standard' (LID)



Wax Myrtle (MC)



Purple Tabebuia (TI)



Desert Cassia - CP)



Ligustrum Tree (LJT)



Loquat (EJ)



Yesterday, Today & Tomorrow (BP)



Selected List of Palms -Large and Small



Bismarck Palm (BN)



Chinese Fan Palm (LC)



Sabal Palm (SP)



Foxtail Palm (WD)



European Fan Palm (CH)



Bamboo Palm -Seifritzi' (CS)



Raphis Palm (RE)



Pygmy Date Palm (PR)



**Selected List of Shrubs (36" or Less Height)**



Muhly Grass (MCP)



Dwarf Firebush (HM)



Knockout Roses - (KR)



Dw Shellings Holly (IVS)



Awabuki Viburnum (VA)



Walters viburnum ' Reiflers dwarf' (VOR)



Coontie (ZP)



Wild Coffee (PN)



Imperial Blue Plumbago (PA)



Parsonii Juniper (JP)



Dwarf Orange Ixora (IXO)



Variegated Shell Ginger (AZT)



**Selected List of Ground Covers -Sun and Shade**



Variegated Flax Lily (DT)



Golden Mound (DE)



Gaillardia (GP)



Purple Lantana (LMV)



Dw Asian Jasmine (TA)



Sun Tolerant Bromeliads (GZ)



Emerald Goddess Liriope (LM)

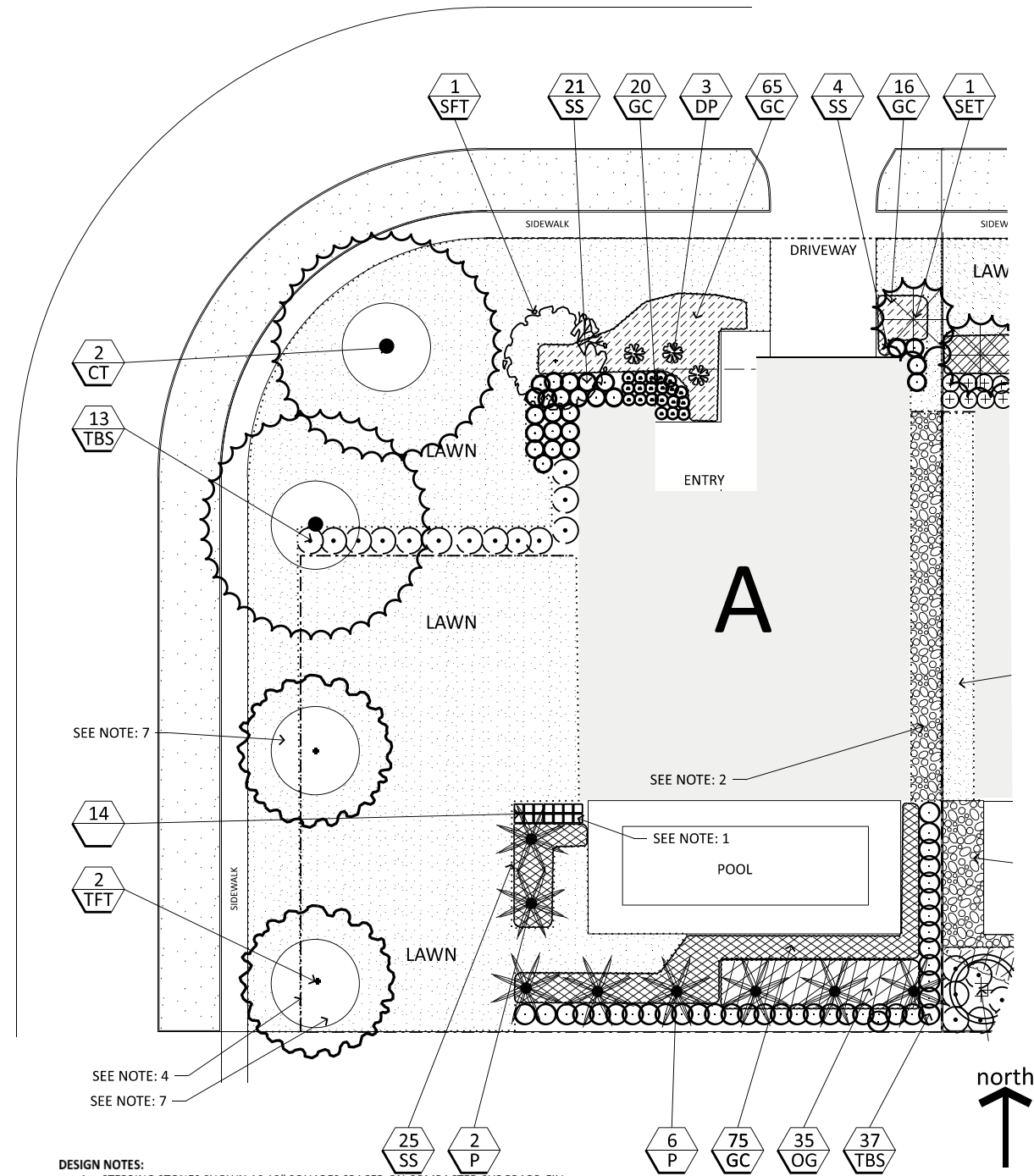


Xanadu Philodendron (Px)



### **BIDDING PLANS**

The following are Black and White reproducible plans that can be used for the homeowner to fill in a plant type and pricing it at a nursery, or to give to a landscape contractor to price out for landscaping each home site.



**DESIGN NOTES:**

1. STEPPING STONES SHOWN AS 18" SQUARES SPACED ON COMPACTED SUBGRADE, FILL IN BETWEEN WITH 1/4" GRAVEL.
2. SHOWN AS 3" THICK GRAVEL PLACED ON GEO-TEXTILE FABRIC (WEED BARRIER). THIS IS FOR AREAS IN BETWEEN STRUCTURES THAT HAVE 5' SETBACKS AND SUN WILL NOT REACH THESE AREAS. DO NOT USE WEED BARRIER UNDER MULCH.
3. THIS IS SHOWN AS 3" THICK GRAVEL PLACED ON GEO-TEXTILE FABRIC (WEED BARRIER) ALONG POOL EDGE AND IN BACKYARD SO THAT MOWING WOULD NOT BE REQUIRED IN THE BACKYARD AREAS. THIS CAN ALSO BE MULCH. DO NOT USE WEED BARRIER UNDER MULCH.
4. PLAN SHOWS PERIMETER FENCING 6' HIGH.
5. SOME AREAS ON NORTH FACING HOMES MAY BE IN ALL DAY SHADE. USE PLANTS SHOWN ON THE SHADE TOLERANT PLANT LIST.
6. SOME AREAS IN NARROW YARDS CAN BE MULCHED, IF NOT IN SUN.
7. WHEN PLANTING CANOPY TREES IN GRASSY AREAS, PLEASE ALLOW A MIN OF 5' DIA CIRCLE FOR MULCH ONLY AROUND TREE, AS GRASS COMPETES WITH TREES FEET AND MAKES IT DIFFICULT FOR THE GRASS TO BE MAINTAINED WITHOUT DAMAGING THE TREE.
8. IN SOME AREAS MULCH CAN BE THE ONLY GROUND COVER, FOR EASE OF MAINTENANCE. DO NOT USE WEED BARRIER UNDER MULCH.
9. SOME ENTRY'S ARE SPACIOUS ENOUGH TO ALLOW FOR THE ADDITION OF A WELCOMING BENCH AT THE FRONT DOOR.

**LEGEND**

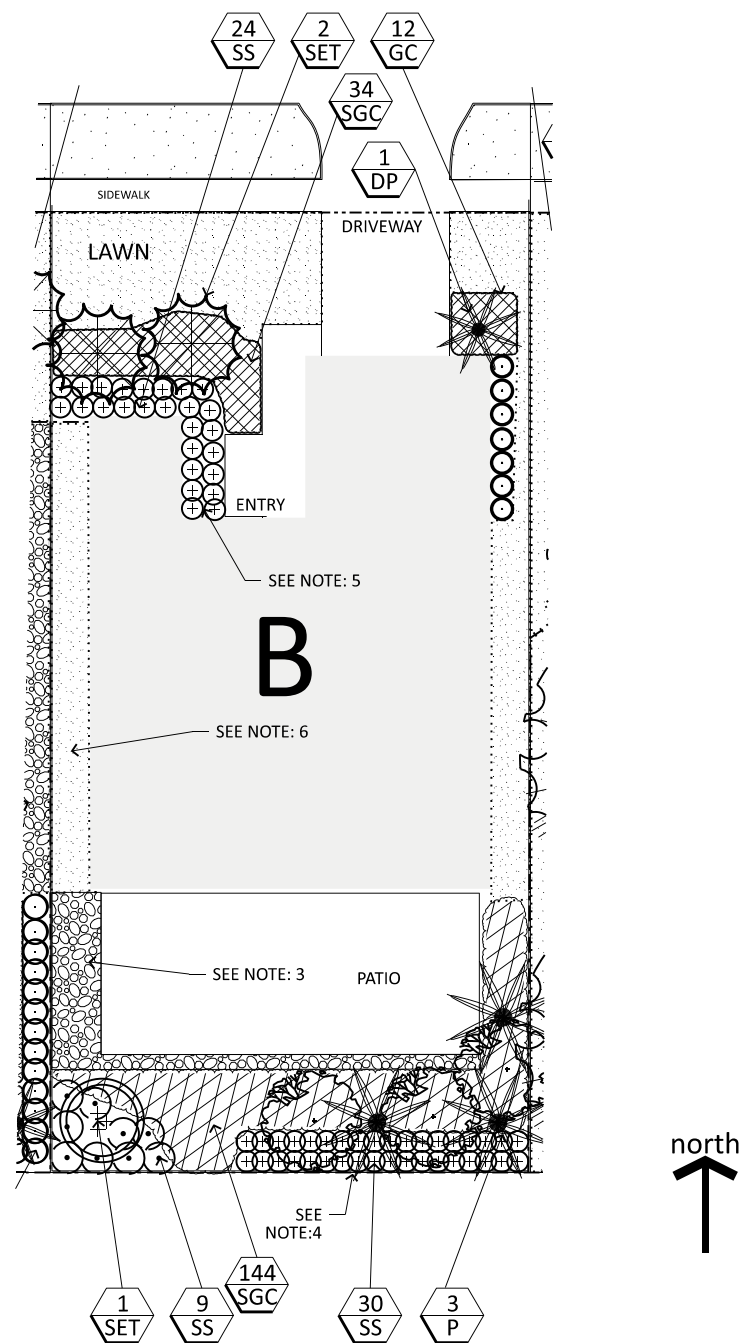
- ST SMALL TREES
- P LARGE PALM
- DP DECORATIVE SMALL PALM
- CT CANOPY TREE
- TFT TALL FLOWERING TREES
- SFT SMALL FLOWERING TREES
- SET SMALL EVERGREEN TREES
- SA SEASONAL ACCENT FLOWERS
- SS SMALL SHRUBS-FLOWERING
- SES SMALL EVERGREEN SHRUBS
- TBS TALL BUFFER SHRUBS
- OG ORNAMENTAL GRASSES
- GC SUN TOLERANT GROUND COVERS
- SGC SHADE TOLERANT GROUND COVERS
- V VINES

**RESIDENTIAL TYPE: A**

ID	QUAN	TYPE	ESTIMATED AVERAGE \$ PER ITEM
ST		SMALL TREES	
P	9	LARGE PALM	
DP	3	DECORATIVE SMALL PALM	
CT	2	CANOPY TREE	
TFT	2	TALL FLOWERING TREES	
SFT	1	SMALL FLOWERING TREES	
SET	1	SMALL EVERGREEN TREES	
SA		SEASONAL ACCENT FLOWERS	
SS	49	SMALL SHRUBS-FLOWERING	
SES		SMALL EVERGREEN SHRUBS	
TBS	50	TALL BUFFER SHRUBS	
OG	35	ORNAMENTAL GRASSES	
GC	176	SUN TOLERANT GROUND COVERS	
SGC		SHADE TOLERANT GROUND COVERS	
V		VINES	
	14	STEPPING STONES	
	2.5	CU YRDS GRAVEL	
	21.1	CU YRDS MULCHING FOR ITEMS SHOWN:	

INSTALLED COSTS:





**DESIGN NOTES:**

1. STEPPING STONES SHOWN AS 18" SQUARES SPACED ON COMPACTED SUBGRADE, FILL IN BETWEEN WITH 3/4" GRAVEL.
2. SHOWN AS 3" THICK GRAVEL PLACED ON GEO-TEXTILE FABRIC (WEED BARRIER). THIS IS FOR AREAS IN BETWEEN STRUCTURES THAT HAVE 5' SETBACKS AND SUN WILL NOT REACH THESE AREAS. DO NOT USE WEED BARRIER UNDER MULCH.
3. THIS IS SHOWN AS 3" THICK GRAVEL PLACED ON GEO-TEXTILE FABRIC (WEED BARRIER) ALONG POOL EDGE AND IN BACKYARD SO THAT MOWING WOULD NOT BE REQUIRED IN THE BACKYARD AREAS. THIS CAN ALSO BE MULCH. DO NOT USE WEED BARRIER UNDER MULCH.
4. PLAN SHOWS PERIMETER FENCING 6' HIGH.
5. SOME AREAS ON NORTH FACING HOMES MAY BE IN ALL DAY SHADE. USE PLANTS SHOWN ON THE SHADE TOLERANT PLANT LIST.
6. SOME AREAS IN NARROW YARDS CAN BE MULCHED, IF NOT IN SUN.
7. WHEN PLANTING CANOPY TREES IN GRASSY AREAS, PLEASE ALLOW A MIN OF 6' DIA CIRCLE FOR MULCH ONLY AROUND TREE, AS GRASS COMPETES WITH TREES ROOTS AND MAKES IT DIFFCULT FOR THE GRASS TO BE MAINTAINED WITHOUT DAMAGING THE TREE.
8. IN SOME AREAS MULCH CAN BE THE ONLY GROUND COVER, FOR EASE OF MAINTENANCE. DO NOT USE WEED BARRIER UNDER MULCH.
9. SOME ENTRY'S ARE SPACIOUS ENOUGH TO ALLOW FOR THE ADDITION OF A WELCOMING BENCH AT THE FRONT DOOR.

**LEGEND**

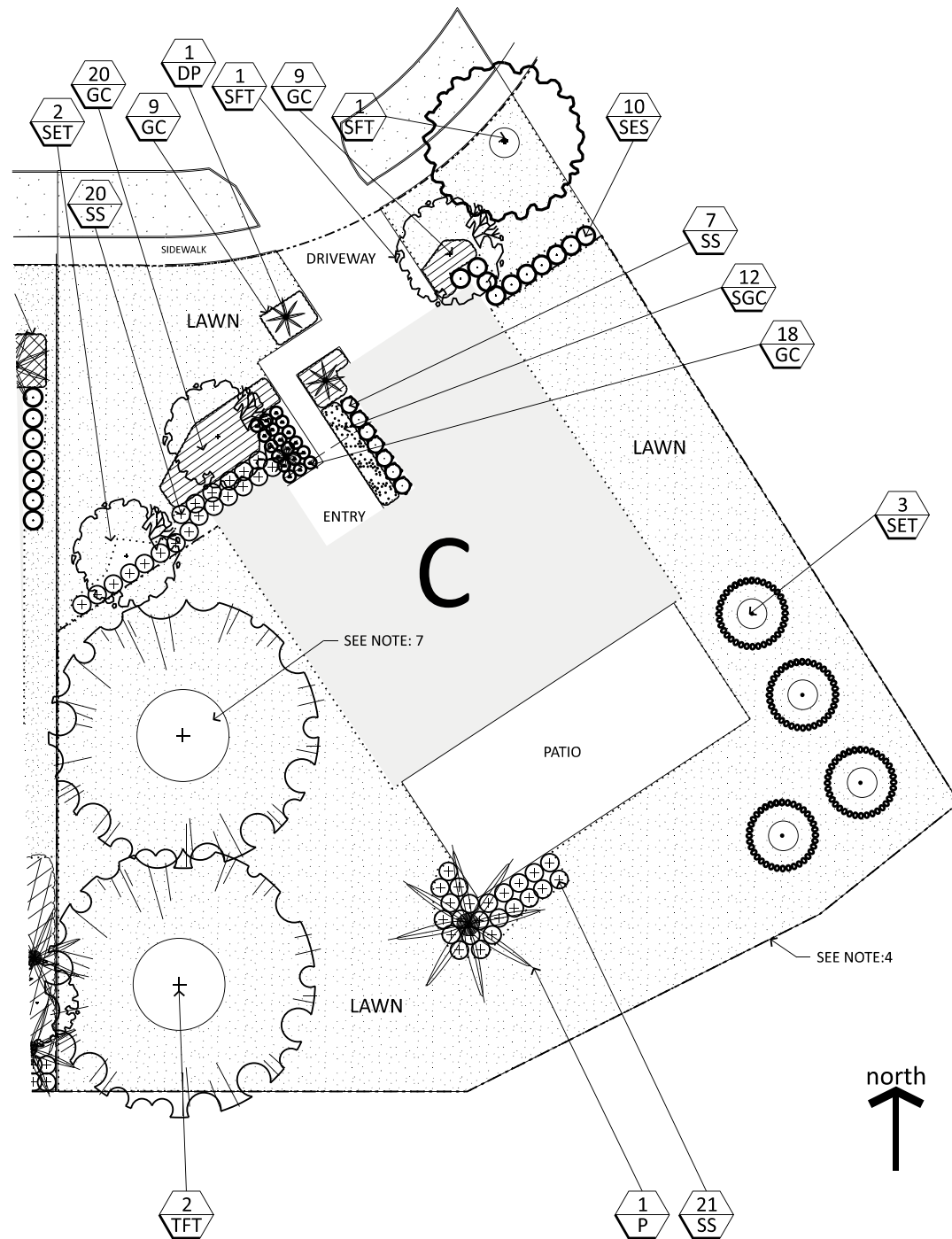
- ST SMALL TREES
- P LARGE PALM
- DP DECORATIVE SMALL PALM
- CT CANOPY TREE
- TFT TALL FLOWERING TREES
- SFT SMALL FLOWERING TREES
- SET SMALL EVERGREEN TREES
- SA SEASONAL ACCENT FLOWERS
- SS SMALL SHRUBS-FLOWERING
- SES SMALL EVERGREEN SHRUBS
- TBS TALL BUFFER SHRUBS
- OG ORNAMENTAL GRASSES
- GC SUN TOLERANT GROUND COVERS
- SGC SHADE TOLERANT GROUND COVERS
- V VINES

**RESIDENTIAL TYPE: B**

ID	QUAN	TYPE	ESTIMATED AVERAGE \$ PER ITEM
ST		SMALL TREES	
P	3	LARGE PALM	
DP	1	DECORATIVE SMALL PALM	
CT		CANOPY TREE	
TFT		TALL FLOWERING TREES	
SFT		SMALL FLOWERING TREES	
SET	3	SMALL EVERGREEN TREES	
SA		SEASONAL ACCENT FLOWERS	
SS	63	SMALL SHRUBS-FLOWERING	
SES		SMALL EVERGREEN SHRUBS	
TBS		TALL BUFFER SHRUBS	
OG		ORNAMENTAL GRASSES	
GC	12	SUN TOLERANT GROUND COVERS	
SGC	178	SHADE TOLERANT GROUND COVERS	
V		VINES	
		STEPPING STONES	
	14.6	CU YRDS MULCHING FOR ITEMS SHOWN:	

INSTALLED COSTS:





**DESIGN NOTES:**

1. STEPPING STONES SHOWN AS 18" SQUARES SPACED ON COMPACTED SUBGRADE, FILL IN BETWEEN WITH 1/2" GRAVEL.
2. SHOWN AS 3" THICK GRAVEL PLACED ON GEO-TEXTILE FABRIC (WEED BARRIER). THIS IS FOR AREAS IN BETWEEN STRUCTURES THAT HAVE 5' SETBACKS AND SUN WILL NOT REACH THESE AREAS. DO NOT USE WEED BARRIER UNDER MULCH.
3. THIS IS SHOWN AS 3" THICK GRAVEL PLACED ON GEO-TEXTILE FABRIC (WEED BARRIER) ALONG POOL EDGE AND IN BACKYARD SO THAT MOWING WOULD NOT BE REQUIRED IN THE BACKYARD AREAS. THIS CAN ALSO BE MULCH. DO NOT USE WEED BARRIER UNDER MULCH.
4. PLAN SHOWS PERIMETER FENCING 6' HIGH.
5. SOME AREAS ON NORTH FACING HOMES MAY BE IN ALL DAY SHADE. USE PLANTS SHOWN ON THE SHADE TOLERANT PLANT LIST.
6. SOME AREAS IN NARROW YARDS CAN BE MULCHED, IF NOT IN SUN.
7. WHEN PLANTING CANOPY TREES IN GRASSY AREAS, PLEASE ALLOW A MIN OF 6' DIA CIRCLE FOR MULCH ONLY AROUND TREE, AS GRASS COMPETES WITH TREE ROOTS AND MAKES IT DIFFICULT FOR THE GRASS TO BE MAINTAINED WITHOUT DAMAGING THE TREE.
8. IN SOME AREAS MULCH CAN BE THE ONLY GROUND COVER, FOR EASE OF MAINTENANCE. DO NOT USE WEED BARRIER UNDER MULCH.
9. SOME ENTRY'S ARE SPACIOUS ENOUGH TO ALLOW FOR THE ADDITION OF A WELCOMING BENCH AT THE FRONT DOOR.

**LEGEND**

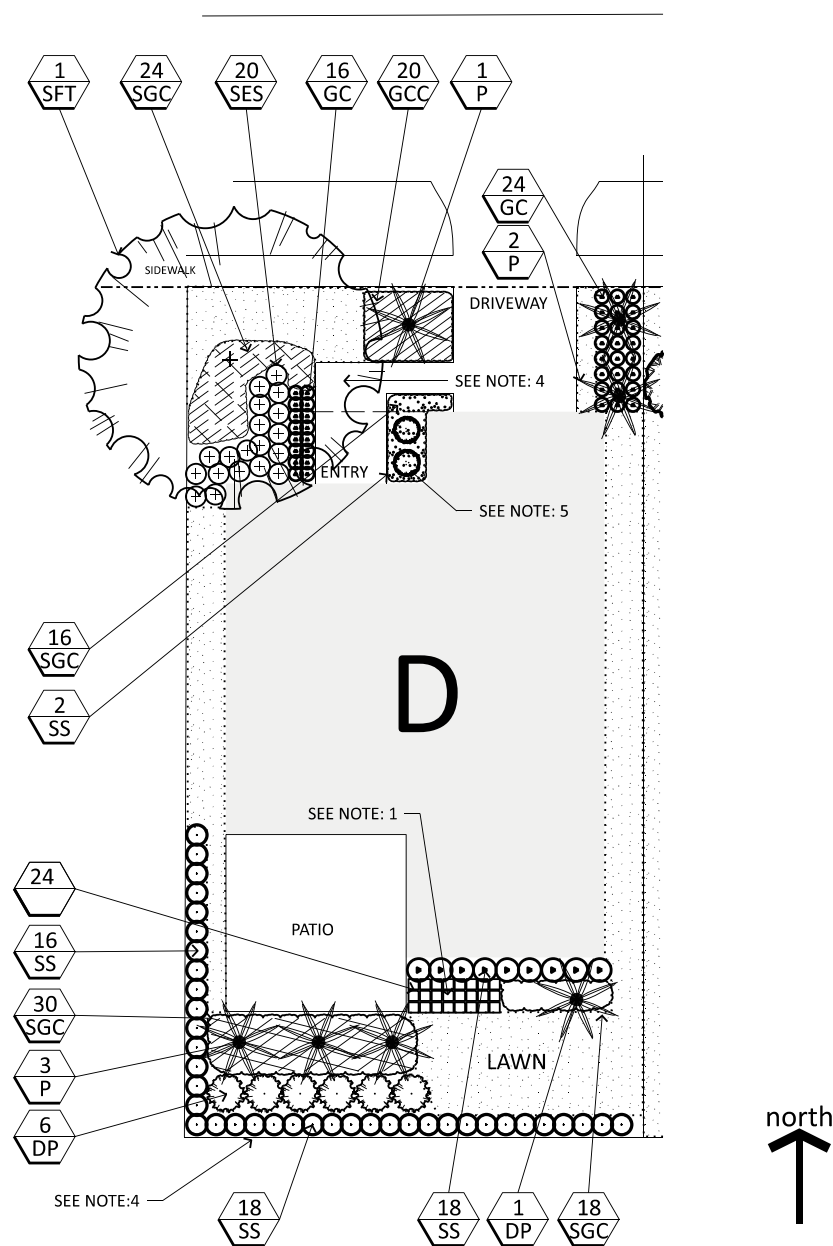
- ST SMALL TREES
- P LARGE PALM
- DP DECORATIVE SMALL PALM
- CT CANOPY TREE
- TFT TALL FLOWERING TREES
- SFT SMALL FLOWERING TREES
- SET SMALL EVERGREEN TREES
- SA SEASONAL ACCENT FLOWERS
- SS SMALL SHRUBS-FLOWERING
- SES SMALL EVERGREEN SHRUBS
- TBS TALL BUFFER SHRUBS
- OG ORNAMENTAL GRASSES
- GC SUN TOLERANT GROUND COVERS
- SGC SHADE TOLERANT GROUND COVERS
- V VINES

**RESIDENTIAL TYPE: C**

ID	QUAN	TYPE	ESTIMATED AVERAGE \$ PER ITEM
ST		SMALL TREES	
P	1	LARGE PALM	
DP	1	DECORATIVE SMALL PALM	
CT		CANOPY TREE	
TFT	2	TALL FLOWERING TREES	
SFT	2	SMALL FLOWERING TREES	
SET	5	SMALL EVERGREEN TREES	
SA		SEASONAL ACCENT FLOWERS	
SS	48	SMALL SHRUBS-FLOWERING	
SES	10	SMALL EVERGREEN SHRUBS	
TBS		TALL BUFFER SHRUBS	
OG		ORNAMENTAL GRASSES	
GC	56	SUN TOLERANT GROUND COVERS	
SGC	12	SHADE TOLERANT GROUND COVERS	
V		VINES	
		STEPPING STONES	
	8.2	CU YRDS MULCHING FOR ITEMS SHOWN:	

INSTALLED COSTS:





**DESIGN NOTES:**

1. STEPPING STONES SHOWN AS 18" SQUARES SPACED ON COMPACTED SUBGRADE, FILL IN BETWEEN WITH 1/4" GRAVEL.
2. SHOWN AS 3" THICK GRAVEL PLACED ON GEO-TEXTILE FABRIC (WEED BARRIER). THIS IS FOR AREAS IN BETWEEN STRUCTURES THAT HAVE 5' SETBACKS AND SUN WILL NOT REACH THESE AREAS. DO NOT USE WEED BARRIER UNDER MULCH.
3. THIS IS SHOWN AS 3" THICK GRAVEL PLACED ON GEO-TEXTILE FABRIC (WEED BARRIER) ALONG POOL EDGE AND IN BACKYARD SO THAT MOWING WOULD NOT BE REQUIRED IN THE BACKYARD AREAS. THIS CAN ALSO BE MULCH. DO NOT USE WEED BARRIER UNDER MULCH.
4. PLAN SHOWS PERIMETER FENCING 6' HIGH.
5. SOME AREAS ON NORTH FACING HOMES MAY BE IN ALL DAY SHADE. USE PLANTS SHOWN ON THE SHADE TOLERANT PLANT LIST.
6. SOME AREAS IN NARROW YARDS CAN BE MULCHED, IF NOT IN SUN.
7. WHEN PLANTING CANOPY TREES IN GRASSY AREAS, PLEASE ALLOW A MIN OF 6' DIA CIRCLE FOR MULCH ONLY AROUND TREE, AS GRASS COMPETES WITH TREES ROOTS AND MAKES IT DIFFICULT FOR THE GRASS TO BE MAINTAINED WITHOUT DAMAGING THE TREE.
8. IN SOME AREAS MULCH CAN BE THE ONLY GROUND COVER, FOR EASE OF MAINTENANCE. DO NOT USE WEED BARRIER UNDER MULCH.
9. SOME ENTRY'S ARE SPACIOUS ENOUGH TO ALLOW FOR THE ADDITION OF A WELCOMING BENCH AT THE FRONT DOOR.

**LEGEND**

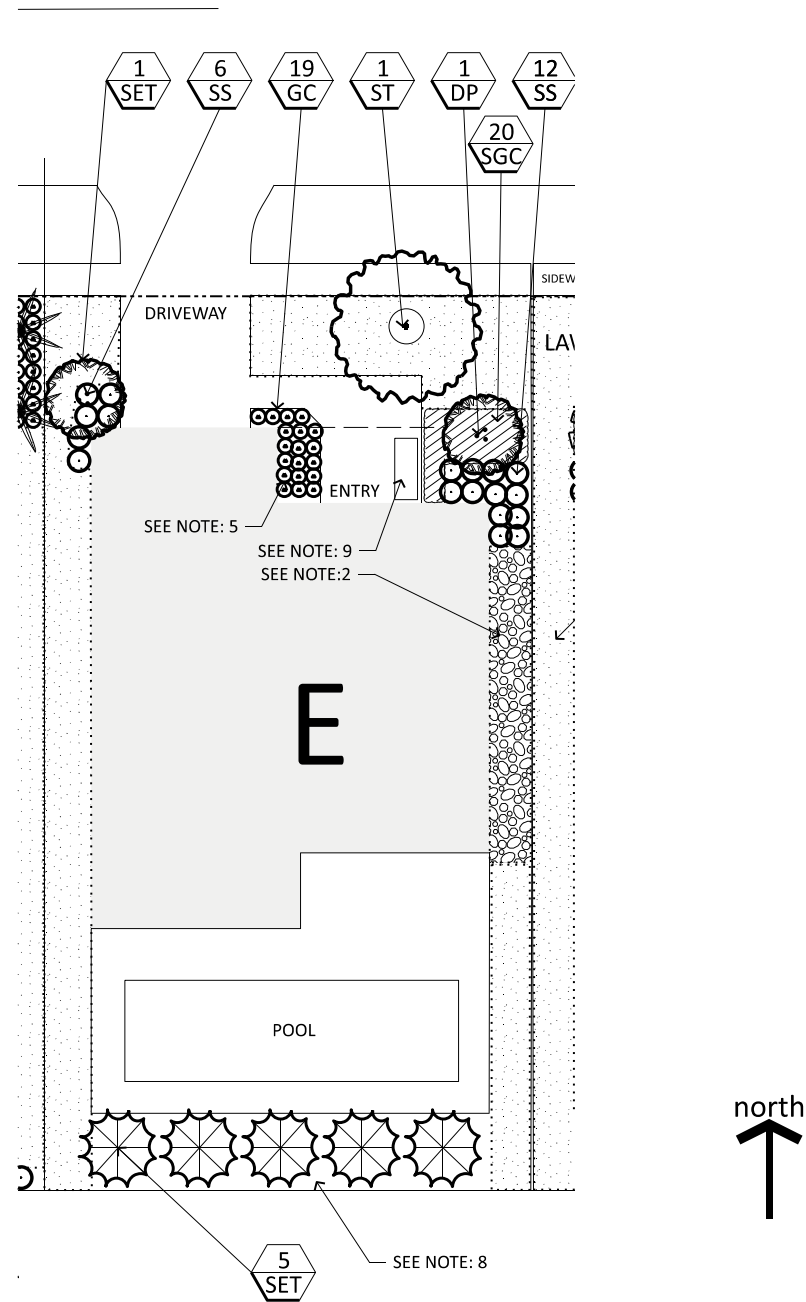
- ST SMALL TREES
- P LARGE PALM
- DP DECORATIVE SMALL PALM
- CT CANOPY TREE
- TFT TALL FLOWERING TREES
- SFT SMALL FLOWERING TREES
- SET SMALL EVERGREEN TREES
- SA SEASONAL ACCENT FLOWERS
- SS SMALL SHRUBS-FLOWERING
- SES SMALL EVERGREEN SHRUBS
- TBS TALL BUFFER SHRUBS
- OG ORNAMENTAL GRASSES
- GC SUN TOLERANT GROUND COVERS
- SGC SHADE TOLERANT GROUND COVERS
- V VINES

**RESIDENTIAL TYPE: D**

ID	QUAN	TYPE	ESTIMATED AVERAGE \$ PER ITEM
ST		SMALL TREES	
P	6	LARGE PALM	
DP	7	DECORATIVE SMALL PALM	
CT		CANOPY TREE	
TFT		TALL FLOWERING TREES	
SFT	1	SMALL FLOWERING TREES	
SET		SMALL EVERGREEN TREES	
SA		SEASONAL ACCENT FLOWERS	
SS	54	SMALL SHRUBS-FLOWERING	
SES	20	SMALL EVERGREEN SHRUBS	
TBS		TALL BUFFER SHRUBS	
OG		ORNAMENTAL GRASSES	
GC	60	SUN TOLERANT GROUND COVERS	
SGC	88	SHADE TOLERANT GROUND COVERS	
V		VINES	
	24	STEPPING STONES	
	14.1	CU YRDS MULCHING FOR ITEMS SHOWN:	

INSTALLED COSTS:





**DESIGN NOTES:**

1. STEPPING STONES SHOWN AS 18" SQUARES SPACED ON COMPACTED SUBGRADE, FILL IN BETWEEN WITH 3/4" GRAVEL.
2. SHOWN AS 3" THICK GRAVEL PLACED ON GEO-TEXTILE FABRIC (WEED BARRIER). THIS IS FOR AREAS IN BETWEEN STRUCTURES THAT HAVE 5' SETBACKS AND SUN WILL NOT REACH THESE AREAS. DO NOT USE WEED BARRIER UNDER MULCH.
3. THIS IS SHOWN AS 3" THICK GRAVEL PLACED ON GEO-TEXTILE FABRIC (WEED BARRIER) ALONG POOL EDGE AND IN BACKYARD SO THAT MOWING WOULD NOT BE REQUIRED IN THE BACKYARD AREAS. THIS CAN ALSO BE MULCH. DO NOT USE WEED BARRIER UNDER MULCH.
4. PLAN SHOWS PERIMETER FENCING 6' HIGH.
5. SOME AREAS ON NORTH FACING HOMES MAY BE IN ALL DAY SHADE. USE PLANTS SHOWN ON THE SHADE TOLERANT PLANT LIST.
6. SOME AREAS IN NARROW YARDS CAN BE MULCHED, IF NOT IN SUN.
7. WHEN PLANTING CANOPY TREES IN GRASSY AREAS, PLEASE ALLOW A MIN OF 6' DIA CIRCLE FOR MULCH ONLY AROUND TREE, AS GRASS COMPETES WITH TREES ROOTS AND MAKES IT DIFFICULT FOR THE GRASS TO BE MAINTAINED WITHOUT DAMAGING THE TREE.
8. IN SOME AREAS MULCH CAN BE THE ONLY GROUND COVER, FOR EASE OF MAINTENANCE. DO NOT USE WEED BARRIER UNDER MULCH.
9. SOME ENTRY'S ARE SPACIOUS ENOUGH TO ALLOW FOR THE ADDITION OF A WELCOMING BENCH AT THE FRONT DOOR.

**LEGEND**

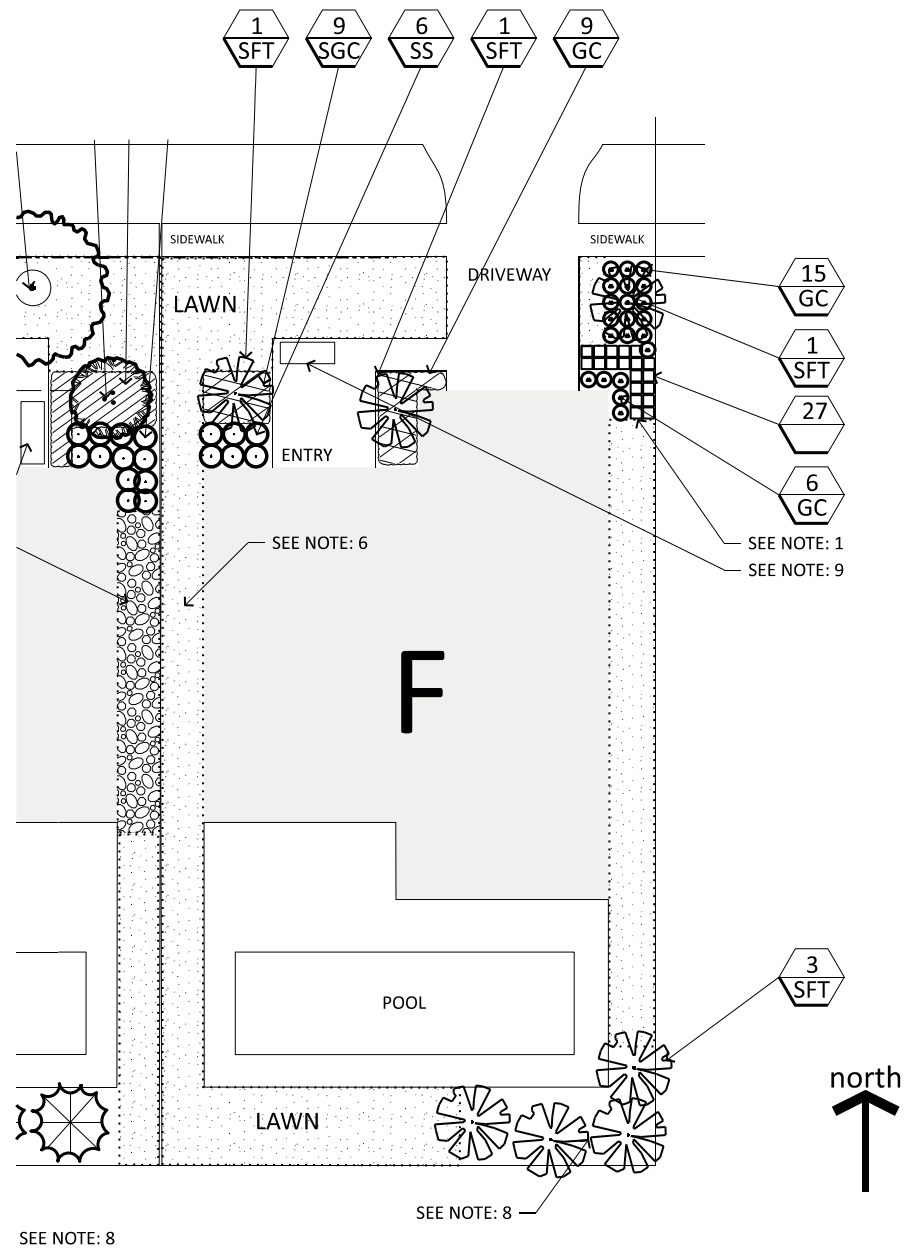
- ST SMALL TREES
- P LARGE PALM
- DP DECORATIVE SMALL PALM
- CT CANOPY TREE
- TFT TALL FLOWERING TREES
- SFT SMALL FLOWERING TREES
- SET SMALL EVERGREEN TREES
- SA SEASONAL ACCENT FLOWERS
- SS SMALL SHRUBS-FLOWERING
- SES SMALL EVERGREEN SHRUBS
- TBS TALL BUFFER SHRUBS
- OG ORNAMENTAL GRASSES
- GC SUN TOLERANT GROUND COVERS
- SGC SHADE TOLERANT GROUND COVERS
- V VINES

**RESIDENTIAL TYPE: E**

ID	QUAN	TYPE	ESTIMATED AVERAGE \$ PER ITEM
ST	1	SMALL TREES	
P		LARGE PALM	
DP	1	DECORATIVE SMALL PALM	
CT		CANOPY TREE	
TFT		TALL FLOWERING TREES	
SFT		SMALL FLOWERING TREES	
SET	6	SMALL EVERGREEN TREES	
SA		SEASONAL ACCENT FLOWERS	
SS	18	SMALL SHRUBS-FLOWERING	
SES		SMALL EVERGREEN SHRUBS	
TBS		TALL BUFFER SHRUBS	
OG		ORNAMENTAL GRASSES	
GC	19	SUN TOLERANT GROUND COVERS	
SGC	20	SHADE TOLERANT GROUND COVERS	
V		VINES	
		STEPPING STONES	
	1.5	CU YRDS GRAVEL	
	3.8	CU YRDS MULCHING FOR ITEMS SHOWN:	

INSTALLED COSTS:





## RESIDENTIAL TYPE: F

ID	QUAN	TYPE	ESTIMATED AVERAGE \$ PER ITEM
ST		SMALL TREES	
P		LARGE PALM	
DP		DECORATIVE SMALL PALM	
CT		CANOPY TREE	
TFT		TALL FLOWERING TREES	
SFT	6	SMALL FLOWERING TREES	
SET		SMALL EVERGREEN TREES	
SA		SEASONAL ACCENT FLOWERS	
SS	6	SMALL SHRUBS-FLOWERING	
SES		SMALL EVERGREEN SHRUBS	
TBS		TALL BUFFER SHRUBS	
OG		ORNAMENTAL GRASSES	
GC	30	SUN TOLERANT GROUND COVERS	
SGC	9	SHADE TOLERANT GROUND COVERS	
V		VINES	
	27	STEPPING STONES	
	1.5	CU YRDS GRAVEL	
	3.0	CU YRDS MULCHING FOR ITEMS SHOWN:	

INSTALLED COSTS:

### DESIGN NOTES:

1. STEPPING STONES SHOWN AS 18" SQUARES SPACED ON COMPACTED SUBGRADE, FILL IN BETWEEN WITH 3/4" GRAVEL.
2. SHOWN AS 3" THICK GRAVEL PLACED ON GEO-TEXTILE FABRIC (WEED BARRIER). THIS IS FOR AREAS IN BETWEEN STRUCTURES THAT HAVE 5' SETBACKS AND SUN WILL NOT REACH THESE AREAS. DO NOT USE WEED BARRIER UNDER MULCH.
3. THIS IS SHOWN AS 3" THICK GRAVEL PLACED ON GEO-TEXTILE FABRIC (WEED BARRIER) ALONG POOL EDGE AND IN BACKYARD SO THAT MOWING WOULD NOT BE REQUIRED IN THE BACKYARD AREAS. THIS CAN ALSO BE MULCH. DO NOT USE WEED BARRIER UNDER MULCH.
4. PLAN SHOWS PERIMETER FENCING 6' HIGH.
5. SOME AREAS ON NORTH FACING HOMES MAY BE IN ALL DAY SHADE. USE PLANTS SHOWN ON THE SHADE TOLERANT PLANT LIST.
6. SOME AREAS IN NARROW YARDS CAN BE MULCHED, IF NOT IN SUN.
7. WHEN PLANTING CANOPY TREES IN GRASSY AREAS, PLEASE ALLOW A MIN OF 6' DIA CIRCLE FOR MULCH ONLY AROUND TREE, AS GRASS COMPETES WITH TREES ROOTS AND MAKES IT DIFFICULT FOR THE GRASS TO BE MAINTAINED WITHOUT DAMAGING THE TREE.
8. IN SOME AREAS MULCH CAN BE THE ONLY GROUNDCOVER, FOR EASE OF MAINTENANCE. DO NOT USE WEED BARRIER UNDER MULCH.
9. SOME ENTRY'S ARE SPACIOUS ENOUGH TO ALLOW FOR THE ADDITION OF A WELCOMING BENCH AT THE FRONT DOOR.

### LEGEND

ST	SMALL TREES
P	LARGE PALM
DP	DECORATIVE SMALL PALM
CT	CANOPY TREE
TFT	TALL FLOWERING TREES
SFT	SMALL FLOWERING TREES
SET	SMALL EVERGREEN TREES
SA	SEASONAL ACCENT FLOWERS
SS	SMALL SHRUBS-FLOWERING
SES	SMALL EVERGREEN SHRUBS
TBS	TALL BUFFER SHRUBS
OG	ORNAMENTAL GRASSES
GC	SUN TOLERANT GROUND COVERS
SGC	SHADE TOLERANT GROUND COVERS
V	VINES